

License Plate Bracket AX



Compatibility

Compatible with a wide range of the luminaires within the OSRAM LEDriving Driving Lights range



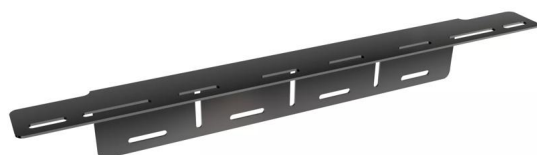
Robust Aluminium

High quality materials, especially light and at the same time robust and resistant



Easy Installation

For easy installation of OSRAM LEDriving driving and working lights



Bringing light to life with OSRAM LEDriving driving and working lights

To support the installation of the OSRAM LEDriving driving & working lights, OSRAM has developed a special series with suitable accessories for them. With the OSRAM License Plate Bracket AX, the OSRAM LEDriving driving & working lights, can now be installed quickly and easily on the appropriate vehicle. The OSRAM License Plate Bracket AX is a practical license plate bracket and holder for the OSRAM LEDriving driving lights in one. The OSRAM License Plate Bracket AX is compatible with a wide range of driving lights in the OSRAM LEDriving driving lights series. OSRAM also offers a 2-year guarantee¹). Please note: Special installation regulations apply. Individual special requirements and legislation of the countries must be observed.

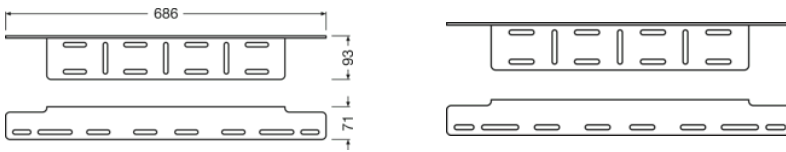
Product datasheet

Technical data

Product information

| | |
|-----------------|---------------|
| Order reference | LEDDL ACC 103 |
|-----------------|---------------|

Dimensions & weight



| | |
|----------------|----------|
| Product weight | 680.00 g |
| Length | 0.0 mm |

Lifespan

| | |
|-----------|---------|
| Guarantee | 2 years |
|-----------|---------|

Country specific categorizations

| | |
|-----------------|---------------|
| Order reference | LEDDL ACC 103 |
|-----------------|---------------|

Logistical data

| | |
|----------------|-------------|
| Commodity code | 76169990990 |
|----------------|-------------|

Environmental information

| Information according Art. 33 of EU Regulation (EC) 1907/2006 (REACH) | |
|---|---------------|
| Date of Declaration | 19-02-2024 |
| Primary Article Identifier | 4062172147705 |
| Declaration No. in SCIP database | In work |

Logistical Data






| Product code | Product description | Packaging unit (Pieces/Unit) | Dimensions (length x width x height) | Volume | Gross weight |
|--------------|---------------------|------------------------------|--------------------------------------|--------|--------------|
|--------------|---------------------|------------------------------|--------------------------------------|--------|--------------|

Product datasheet

| | | | | | |
|---------------|--------------------------|--------------------------|-----------------------------|-----------------------|-----------|
| 4062172147705 | License Plate Bracket AX | Folding carton box 1 | 694 mm x 102 mm x 80 mm | 5.66 dm ³ | 820.00 g |
| 4062172147712 | License Plate Bracket AX | Shipping carton box 6 | 708 mm x 246 mm x 223 mm | 38.84 dm ³ | 5495.00 g |

The mentioned product code describes the smallest quantity unit which can be ordered. One shipping unit can contain one or more single products. When placing an order, for the quantity please enter single or multiples of a shipping unit.

Download Data

| File | |
|---|--|
|  | User instruction LEDriving, License Plate Bracket AX |
|  | Movie application OSRAM Quality Testing LEDriving working and driving lights (EN) |
|  | Movie application OSRAM LEDdriving and working lights Imagefilm (EN) |
|  | Movie application LEDriving Driving and Working Lights Reference Video (EN) |
|  | 360 Degree Image License Plate Bracket AX LEDDL ACC 103 |

Legal advice:

1) Precise terms and conditions at: www.osram.com/am-guarantee

Application advice:

For more detailed application information and graphics please see product datasheet and user instruction.

Application advice

For more detailed application information and graphics please see product datasheet.

Disclaimer

Subject to change without notice. Errors and omission excepted. Always make sure to use the most recent release.

OSRAM