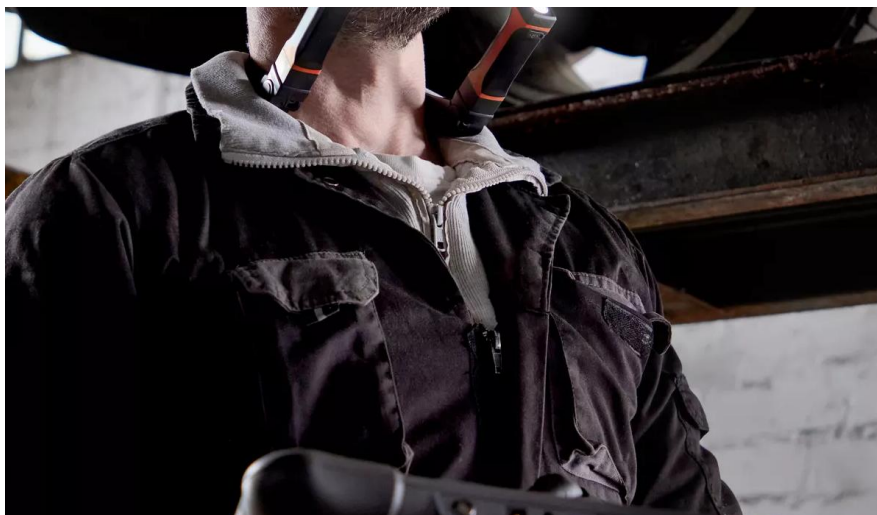


LEDinspect WEARABLE NECKLIGHT



Detachable Torches

High flexibility - can be placed around the neck, on the head, in the hand or on a magnetic surface



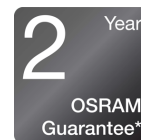
Up to 265 lm (high) & 130 lm (low)

Two light functions: Up to 265 lm (high) and up to 130 lm (low)



Approx. 1.5 hours charging time

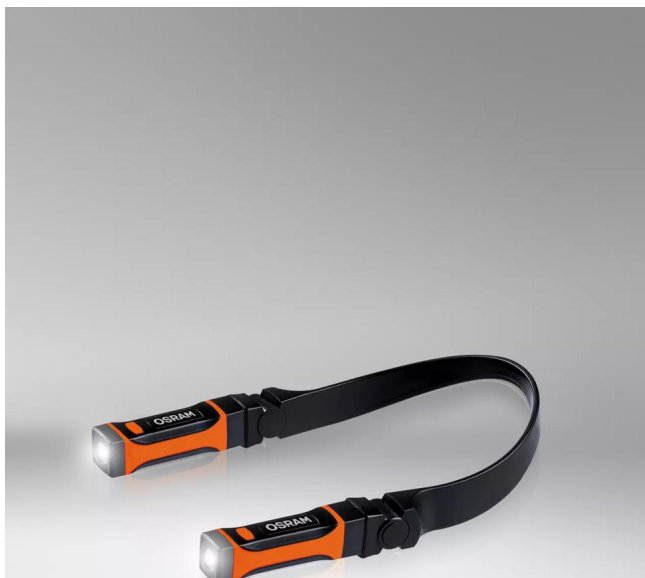
With a charging time of only approx. 1.5 hours, this OSRAM light is quickly ready for use again



2-year OSRAM Guarantee*

Systematic quality assurance measures underpin the premium workmanship and functionality of our products. Innovative technology and excellent quality really pay dividends for our customers.

Product family datasheet



Light is versatile

This rechargeable neck light with two individually detachable torches from OSRAM is perfect for professional and private use. With two light functions up to 265lm (high), 130lm (low) and an adjustable 90 degree angle, this offers different setting options for a variety of tasks. The LEDinspect Wearable Neck Light is particularly impressive with its great flexibility - it can be used around the neck, on the head, in the hand or on a magnetic surface. The rechargeable battery allows up to 3 hours of operation at high power or up to 4.5 hours at low power and with a charging time of only about 1.5 hours, this OSRAM lamp is also quickly ready for use again. A USB Micro B charging cable with two connections for the individual lamps to charge the lithium battery is included. In accordance with protection class IP54, this lamp has protection against the ingress of dust particles and against splashing water and has been tested for impact resistance in accordance with IK07. With a weight of only 115g and the flexible design, the product is easy to store and transport and is therefore ideal as a light for handicraft work, craft activities, car repairs and in everyday life. OSRAM also provides a 2-year guarantee* *For precise conditions please refer to: www.osram.com/am-guarantee

Product family datasheet

Technical data

Product description	Product information		Electrical data	Photometrical data		
	Order reference	Application (Category and Product specific)	Nominal voltage	Light color LED	Luminous flux	Color temperature
INSPECTION LAMP	LEDIL413	LED inspection lights	3.7 V	White	265 lm	6500 K

Product description	LED module information	Dimensions & weight				Colors & materials
	Number of LEDs per module	Length	Product weight	Height	Width	Base color
INSPECTION LAMP	1+1	224.0 mm	115.00 g	150 mm	39.0 mm	Black / Orange

Product description	Lifespan	Additional product data		Capabilities
	Guarantee	Number of included batteries	Type of Battery	Technology
INSPECTION LAMP	2 years	1	Rechargeable	LED

Product description	Certificates & standards	Environmental information Information according Art. 33 of EU Regulation (EC) 1907/2006 (REACH)		
	IK Class	Date of Declaration	Primary Article Identifier	Candidate List Substance 1
INSPECTION LAMP	IK07	08-03-2024	4052899630987	Lead

Product description	CAS No. of substance 1	Safe Use Instruction	Declaration No. in SCIP database
INSPECTION LAMP	7439-92-1	The identification of the Candidate List substance is sufficient to allow safe use of the article.	9b7cd37b-d0e8-4a84-abf2-d10e9bfc7dfe

Product family datasheet

Legal advice

Application advice: For more detailed application information and graphics please see product datasheet and the user instruction.

*for precise conditions please refer to:

www.osram.com/am-guarantee

Application advice

For more detailed application information and graphics please see product datasheet.

Disclaimer

Subject to change without notice. Errors and omission excepted. Always make sure to use the most recent release.