

## Halogen (< 75 V) with Reflector

OSRAM reflector low voltage halogen lamps provide precision optical alignment for medical and industrial fiber optic illuminators, microscopy, and surgical overhead lighting



### Areas of application

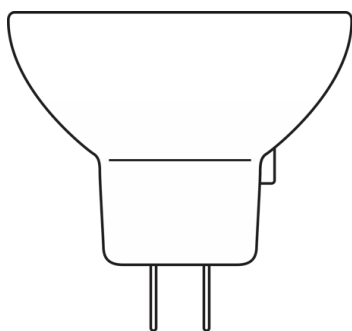
- Microscopy
- Laboratory & Analysis
- UV Curing
- Fiber Illumination
- Surgical & Dental Overhead

### Product features and benefits

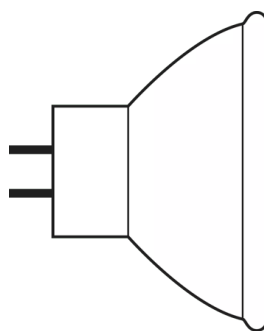
- Precise filament alignment with patented quartz pinch technology
- OSRAM HLX lamps provide 10% higher luminous efficacy over standard halogen
- Instant on and nearly constant luminous flux over the life of the lamp
- Dimmable



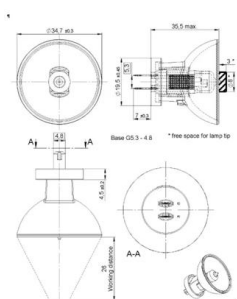
# Product family datasheet



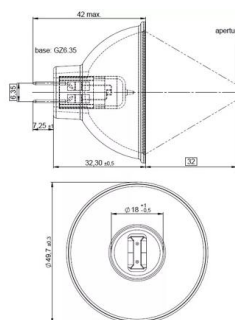
HALOGEN LAMP WITH REFLECTOR 64255



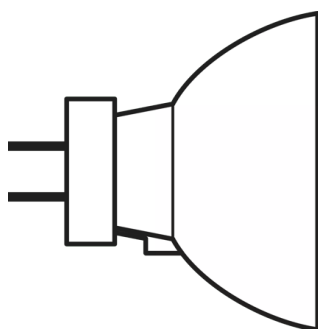
Halogen Lamp with reflector MR16



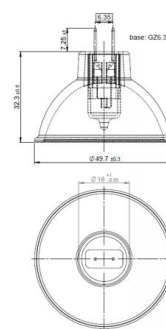
64617S 75W 12V



64615 HLX 75W 12V

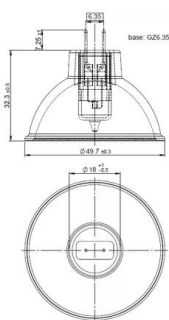


Halogen Lamp with reflector MR11

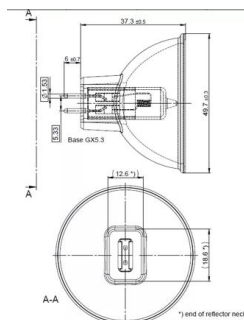


64634 HLX 150W 15V

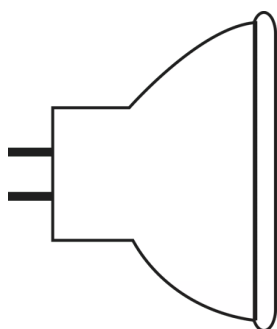
# Product family datasheet



64627 HLX 100W 12V



64653 HLX 250W 24V



HALOGEN REFLECTOR LAMPS FO

## Product family datasheet

### Technical data

Product description	General Product Information		Electrical Data	Photometric Data
	ANSI code	LIF code	Nominal voltage	Color rendering index Ra
64255 20 W 8 V	-		8 V	100
93520 300 W 82 V <sup>1)</sup>	FHS		82.0 V	100
64607 50 W 8 V	EFM	A1/229	8 V	100
64619 90 W 14.5 V	EPX		14.5 V	100
93506 250 W 120 V	ENH		120 V	100
64617 S 75 W 12 V <sup>2)</sup>	-		12.0 V	
64615 HLX	EFN	A1/230	12.0 V	
64617 75 W 12 V	-	M/117	12.0 V	100
64634 HLX	EFR	A1/232	15.0 V	
150 W 21 V GX5.3	EJM		21.0 V	
64627 HLX	EFP	A1/231	12.0 V	90-100
64624 100 W 12 V	-	A1/51	12.0 V	100
64659 250 W 24 V	ELC-10	A1/259	24.0 V	100
93518 300 W 120 V	ELH		120 V	100
64629 100 W 12 V	EFP-6	A1/231	12.0 V	100
64637 100 W 12 V	EBV	A1/271	12.0 V	100
64635 HLX <sup>3)</sup>	-		15.0 V	100
64620 150 W 15 V	EFR-5	A1/232	15.0 V	
64653 HLX	ELC	A1/259	24.0 V	100
93654 250 W 24 V	-		24.0 V	100
93637 150 W 21 V	EJV		21.0 V	100
93638 150 W 21 V	EKE		21.0 V	100
93653 250 W 24 V	ELC-3	A1/259	24.0 V	100

Product description	Focal length	Nominal luminous flux	Color temperature	Beam type
64255 20 W 8 V	26.0 mm			
93520 300 W 82 V <sup>1)</sup>	152.5 mm	650 lm		
64607 50 W 8 V	32.0 mm			
64619 90 W 14.5 V	155.0 mm	43 lm		
93506 250 W 120 V	152.5 mm	340 lm	3150 K	
64617 S 75 W 12 V <sup>2)</sup>	26.0 mm			SP
64615 HLX	32.0 mm			
64617 75 W 12 V	26.0 mm			
64634 HLX	32.0 mm			
150 W 21 V GX5.3	38.1 mm	115 lm	3400 K	
64627 HLX	32.0 mm			
64624 100 W 12 V	26.0 mm			

## Product family datasheet

Product description	Focal length	Nominal luminous flux	Color temperature	Beam type
64659 250 W 24 V	35.0 mm	400 lm	3200 K	
93518 300 W 120 V	152.5 mm	525 lm		
64629 100 W 12 V	32.0 mm			
64637 100 W 12 V	32.0 mm	150 lm	3000 K	SP
64635 HLX <sup>3)</sup>	19.0 mm			
64620 150 W 15 V	32.0 mm		3270 K	
64653 HLX	35.0 mm	900 lm	3400 K	
93654 250 W 24 V	35.0 mm	475 lm	3200 K	
93637 150 W 21 V	44.5 mm	270 lm		
93638 150 W 21 V	44.5 mm	160 lm	3300 K	
93653 250 W 24 V	35.0 mm	550 lm	3250 K	

Product description	Physical Attributes & Dimensions	Operating Conditions		
	Lamp base	Burning position	Cooling	Minimum diameter of lamp enclosure
64255 20 W 8 V	G4	Other	Forced	35.0 mm
93520 300 W 82 V <sup>1)</sup>	GX5.3	s90		
64607 50 W 8 V	GZ6.35	p90/p15	Forced	51.0 mm
64619 90 W 14.5 V	GX5.3	Other	Forced	51.0 mm
93506 250 W 120 V	GY5.3	s90		
64617 S 75 W 12 V <sup>2)</sup>	G5.3-4.8	p90/p15	Forced	35.0 mm
64615 HLX	GZ6.35	p90/p15	Forced	51.0 mm
64617 75 W 12 V	G5.3-4.8	p90/p15	Forced	35.0 mm
64634 HLX	GZ6.35	p90/p15	Forced	51.0 mm
150 W 21 V GX5.3	GX5.3	Other	Forced	51.0 mm
64627 HLX	GZ6.35	Other	Forced	51.0 mm
64624 100 W 12 V	G5.3-4.8	p90/p15	Forced	35.0 mm
64659 250 W 24 V	GX5.3	Any		
93518 300 W 120 V	GY5.3	s90		
64629 100 W 12 V	GZ6.35	p90/p15	Forced	51.0 mm
64637 100 W 12 V	GZ6.35	s120		
64635 HLX <sup>3)</sup>	GZ6.35	Any	Forced	51.0 mm
64620 150 W 15 V	GZ6.35	p90/p15		
64653 HLX	GX5.3	Any	Forced	51.0 mm
93654 250 W 24 V	GX5.3	Any	Forced	51.0 mm
93637 150 W 21 V	GX5.3	s90	Convection	51.0 mm
93638 150 W 21 V	GX5.3	s90	Forced	51.0 mm
93653 250 W 24 V	GX5.3	Any	Forced	51.0 mm

## Product family datasheet

Product description	Lifetime Data	Environmental & Regulatory Information Information according Art. 33 of EU Regulation (EC) 1907/2006 (REACH)		
	Nominal lifetime	Primary article identifier	Declaration no. in SCIP database	Candidate list substance 1
64255 20 W 8 V	50 hr	4050300006833	No declarable substances contained	No declarable substances contained
93520 300 W 82 V <sup>1)</sup>	70 hr	4050300350196	No declarable substances contained	No declarable substances contained
64607 50 W 8 V	50 hr	4050300006789	No declarable substances contained	No declarable substances contained
64619 90 W 14.5 V	500 hr	4050300017273	In work	
93506 250 W 120 V	175 hr	4050300349930	No declarable substances contained	No declarable substances contained
64617 S 75 W 12 V <sup>2)</sup>	25 hr	4050300461106	No declarable substances contained	No declarable substances contained
64615 HLX	50 hr	4050300006796	No declarable substances contained	No declarable substances contained
64617 75 W 12 V	25 hr	4050300231211	No declarable substances contained	No declarable substances contained
64634 HLX	50 hr	4050300006819	No declarable substances contained	No declarable substances contained
150 W 21 V GX5.3	40 hr	4008321028082	In work	
64627 HLX	50 hr	4050300006802	No declarable substances contained	No declarable substances contained
64624 100 W 12 V	25 hr	4050300013916	No declarable substances contained	No declarable substances contained
64659 250 W 24 V	1000 hr	4008321197795	No declarable substances contained	No declarable substances contained
93518 300 W 120 V	35 hr	4050300350059	No declarable substances contained	No declarable substances contained
64629 100 W 12 V	600 hr	4050300943169   4008321540164	No declarable substances contained	No declarable substances contained
64637 100 W 12 V	1500 hr	4008321352071	No declarable substances contained	No declarable substances contained
64635 HLX <sup>3)</sup>	50 hr	4050300238807	No declarable substances contained	No declarable substances contained
64620 150 W 15 V	500 hr	4008321540140   4050300797397	No declarable substances contained	No declarable substances contained
64653 HLX	50 hr	4052899329348	No declarable substances contained	No declarable substances contained
93654 250 W 24 V	700 hr	4050300666464	In work	
93637 150 W 21 V	100 hr	4050300350097	No declarable substances contained	No declarable substances contained
93638 150 W 21 V	200 hr	4050300456843	No declarable substances contained	No declarable substances contained
93653 250 W 24 V	300 hr	4050300636450	No declarable substances contained	No declarable substances contained

<sup>1)</sup> Available on request

<sup>2)</sup> Spot adjustment

<sup>3)</sup> Infra-red lamp; temperature at the focal point approximately 1300 °C

## Product family datasheet

---

### Safety advice

To prevent personal injury or damage to property, halogen lamps may only be operated in suitable luminaires designed with suitable mechanisms (protective shields, grids, etc.) to ensure that in the event of a lamp bursting no parts/shards can escape and that during operation no ultraviolet radiation can escape. There must also be a warning sign to indicate that the lamps give off high levels of heat. Detailed information is available on request.

---

### Application advice

For more detailed application information and graphics please see product datasheet.

---

### Disclaimer

Subject to change without notice. Errors and omission excepted. Always make sure to use the most recent release.