

Halogen lamps with reflector MR16

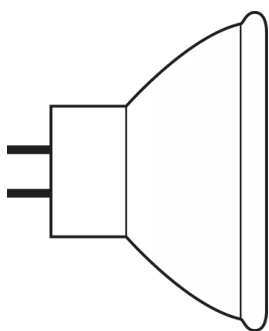


Product family features

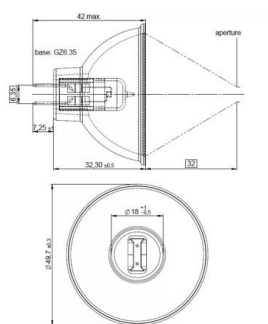
- Xenon instead of krypton as the filler gas (XENOPHOT HLX versions)
- Luminous flux up to 10 % higher with same power consumption (XENOPHOT HLX versions)



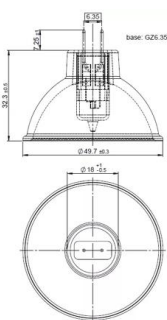
Product family datasheet



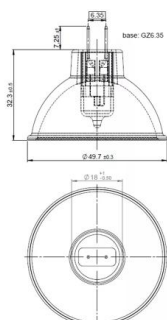
383894_Halogen Lamp with reflector MR16



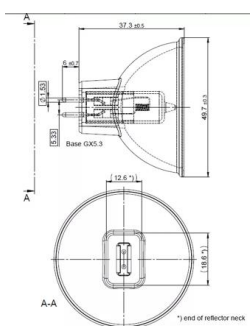
64615 HLX 75W 12V



64627 HLX 100W 12V



64634 HLX 150W 15V



64653 HLX 250W 24V

Product family datasheet

Technical data

Product description	Product information	Electrical data		Light technical data	Dimensions & weight		Lifespan
	Order reference	Nominal voltage	Nominal wattage	Focal length	Diameter	Length	Lifespan
64607 50 W 8 V	64607 EFM 50W 8	8 V	50.00 W	32.0 mm	51.0 mm	42.0 mm	50 h
64615 HLX	64615 HLX	12.0 V	75.00 W	32.0 mm	51.0 mm	42.0 mm	50 h
64619 90 W 14.5 V	64619 90W 14,8V	14.5 V	90.00 W	155.0 mm	51.0 mm	45.0 mm	500 h
64627 HLX	64627 HLX	12.0 V	100.00 W	32.0 mm	51.0 mm	42.0 mm	50 h
64629 100 W 12 V	64629 100W 12V	12.0 V	100.00 W	32.0 mm	51.0 mm	42.0 mm	600 h
64637 100 W 12 V	64637 100W 12V	12.0 V	100.00 W	32.0 mm	51.0 mm	42.0 mm	1500 h
64620 150 W 15 V	64620 150W 15V	15.0 V	150.00 W	32.0 mm	51.0 mm	42.0 mm	500 h
64634 HLX	64634 HLX	15.0 V	150.00 W	32.0 mm	51.0 mm	42.0 mm	50 h
64635 HLX ¹⁾	64635 HLX	15.0 V	150.00 W	19.0 mm	51.0 mm	45.0 mm	50 h
93637 150 W 21 V	93637 150W 21V	21.0 V	150.00 W	44.5 mm	51.0 mm	44.5 mm	100 h
93638 150 W 21 V	93638 EKE150W G	21.0 V	150.00 W	44.5 mm	51.0 mm	44.8 mm	200 h
64653 HLX	64653 HLX	24.0 V	250.00 W	35.0 mm	51.0 mm	44.5 mm	50 h
93653 250 W 24 V	ELC3 250W GX5.3	24.0 V	250.00 W	35.0 mm	999.9 mm	44.8 mm	300 h
64659 250 W 24 V	64659	24.0 V	250.00 W	35.0 mm	51.0 mm	44.5 mm	1000 h
93506 250 W 120 V	93506	120 V	250.00 W	152.5 mm	51.0 mm	44.5 mm	175 h
93518 300 W 120 V	93518 ELH 300W	120 V	300.00 W	152.5 mm	51.0 mm	45.0 mm	35 h

Product description	Additional product data			Capabilities	
	Coating	Base (standard designation)	Minimum diameter of lamp enclosure	Cooling	Burning position
64607 50 W 8 V	Aluminum	GZ6.35	51.0 mm	Forced	p90/p15
64615 HLX	Dichroic	GZ6.35	51.0 mm	Forced	p90/p15
64619 90 W 14.5 V	True	GX5.3	51.0 mm	Forced	Other
64627 HLX	True	GZ6.35	51.0 mm	Forced	Other
64629 100 W 12 V	Dichroic	GZ6.35	51.0 mm	Forced	p90/p15
64637 100 W 12 V	Dichroic	GZ6.35			s120
64620 150 W 15 V	Dichroic	GZ6.35			p90/p15
64634 HLX	Dichroic	GZ6.35	51.0 mm	Forced	p90/p15
64635 HLX ¹⁾	Gold	GZ6.35	51.0 mm	Forced	Any
93637 150 W 21 V	True	GX5.3	51.0 mm	Convection	s90
93638 150 W 21 V	Dichroic	GX5.3	51.0 mm	Forced	s90

Product family datasheet

Product description	Additional product data			Capabilities	
	Coating	Base (standard designation)	Minimum diameter of lamp enclosure	Cooling	Burning position
64653 HLX	True	GX5.3	51.0 mm	Forced	Any
93653 250 W 24 V	Dichroic	GX5.3	51.0 mm	Forced	Any
64659 250 W 24 V	Dichroic	GX5.3			Any
93506 250 W 120 V	Dichroic	GY5.3			s90
93518 300 W 120 V	Dichroic	GY5.3			s90

Product description	Country specific categorizations		Environmental information Information according Art. 33 of EU Regulation (EC) 1907/2006 (RECh)	
	ANSI code	LIF	Date of Declaration	Primary Article Identifier
64607 50 W 8 V	EFM	A1/229	29-02-2024	4050300006789
64615 HLX	EFN	A1/230	29-02-2024	4050300006796 4055462168832
64619 90 W 14.5 V	EPX		29-02-2024	4050300017273
64627 HLX	EFP	A1/231	29-02-2024	4050300006802 4008321074331 4055462168405 4052899447592
64629 100 W 12 V	EFP-6		29-02-2024	4050300943169 4008321540164
64637 100 W 12 V	EBV	A1/271	29-02-2024	4008321352071
64620 150 W 15 V	EFR-5		29-02-2024	4050300797397 4008321540140
64634 HLX	EFR	A1/232	29-02-2024	4050300006819 4055462168375 4052899447561 4055462169372
64635 HLX ¹⁾			29-02-2024	4050300238807
93637 150 W 21 V	EJV		29-02-2024	4050300350097 4008321106070
93638 150 W 21 V	EKE		29-02-2024	4050300456843
64653 HLX	ELC	A1/259	29-02-2024	4052899329348
93653 250 W 24 V	ELC-3		29-02-2024	4050300636450
64659 250 W 24 V	ELC-10		29-02-2024	4008321197795 4008321540188
93506 250 W 120 V	ENH		29-02-2024	4050300349930
93518 300 W 120 V	ELH		29-02-2024	4050300350059

Product description	Candidate List Substance 1	Declaration No. in SCIP database	Photometrical data	
			Nominal luminous flux	Color temper- ature
64607 50 W 8 V	No declarable substances contained	No declarable substances contained		
64615 HLX	No declarable substances contained	In work		

Product family datasheet

Product description	Candidate List Substance 1	Declaration No. in SCIP database	Photometrical data	
			Nominal luminous flux	Color temperature
64619 90 W 14.5 V		In work	43 lm	
64627 HLX	No declarable substances contained	In work		
64629 100 W 12 V	No declarable substances contained	No declarable substances contained		
64637 100 W 12 V	No declarable substances contained	No declarable substances contained		3000 K
64620 150 W 15 V	No declarable substances contained	No declarable substances contained		3270 K
64634 HLX	No declarable substances contained	In work		
64635 HLX ¹⁾	No declarable substances contained	No declarable substances contained		
93637 150 W 21 V	No declarable substances contained	No declarable substances contained	270 lm	
93638 150 W 21 V	No declarable substances contained	No declarable substances contained	160 lm	3300 K
64653 HLX	No declarable substances contained	No declarable substances contained	900 lm	3400 K
93653 250 W 24 V	No declarable substances contained	No declarable substances contained	550 lm	3250 K
64659 250 W 24 V	No declarable substances contained	In work	400 lm	3200 K
93506 250 W 120 V	No declarable substances contained	No declarable substances contained	340 lm	3150 K
93518 300 W 120 V	No declarable substances contained	No declarable substances contained	525 lm	

¹⁾ Infra-red lamp; temperature at the focal point approximately 1300 °C

Product family datasheet

Application advice

For more detailed application information and graphics please see product datasheet.

References / Links

For further technical information please refer to the following OSRAM brochure:

“Technology and applications, Low-voltage tungsten-halogen lamps”

“Halogen lamps, low and medium voltage for entertainment, technical and medical applications” cross reference list

Disclaimer

Subject to change without notice. Errors and omission excepted. Always make sure to use the most recent release.